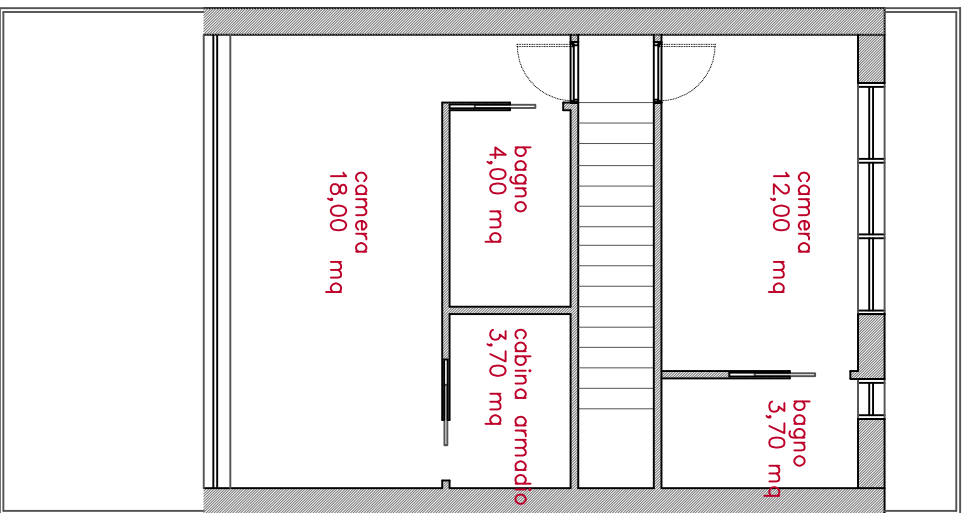
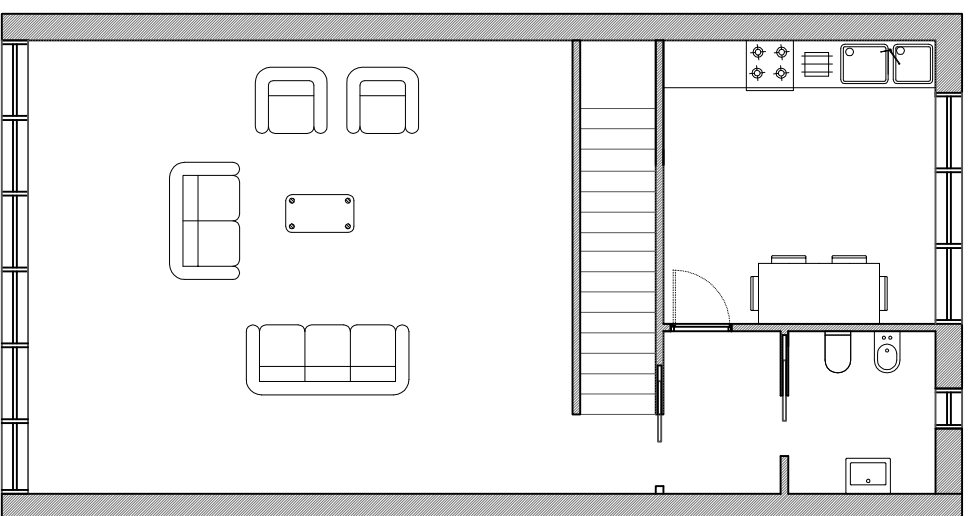
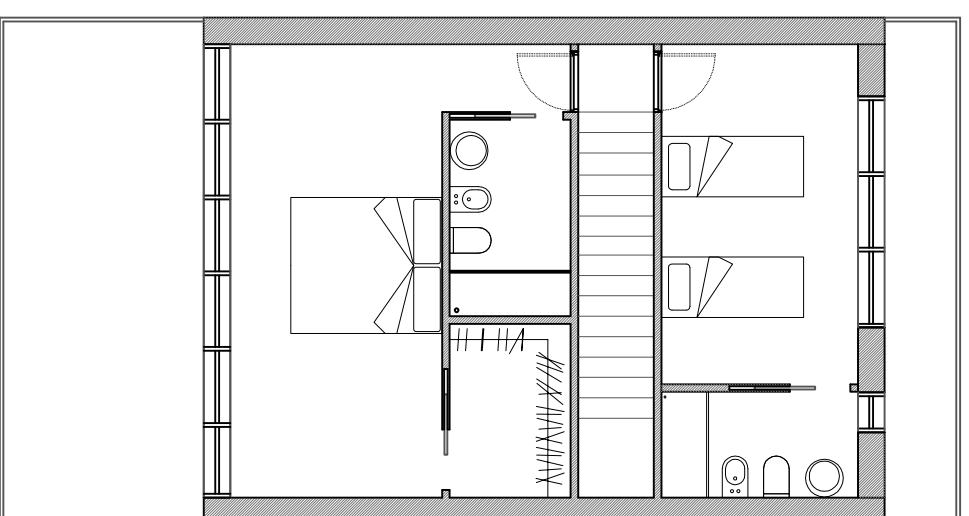


piano terra



piano primo

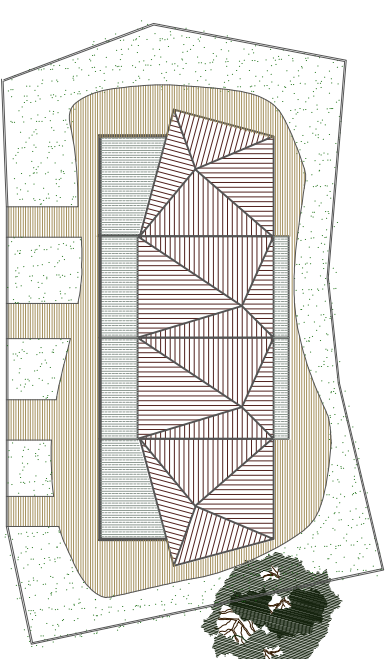


LEGENDA:

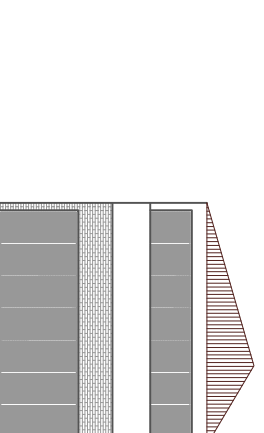
**TIPLOGIA B**  
 V: 400,00 m<sup>3</sup>  
(60,00 m<sup>3</sup> x 2,80 m) + (60,00 m<sup>3</sup> x 2,80 m) =

P.S.	85,00	m <sup>2</sup>
P.T.	85,00	m <sup>2</sup>
P.1.	60,00	m <sup>2</sup>
S.C.	85,00	m <sup>2</sup>

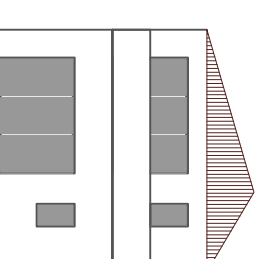
- 1 soggiorno
- 1 cucina
- 2 stanze
- 3 bagni



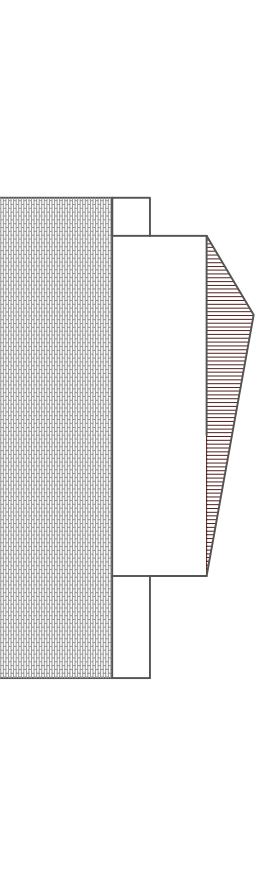
sezione



prospetto principale



prospetto posteriore



prospetto laterale